



**2019**

**CHIN POON**

# Investor Conference

No.17, Ln. 5, Sec. 2, Nanshan Rd., Luzhu Dist.,  
Taoyuan City 33852, Taiwan (R.O.C.)

TEL: +886-3-322-2226

Website: [www.chinpoon.com](http://www.chinpoon.com)

# Disclaimer

---

The presentation contains projections & estimates of financial information as well as market and product developments for future periods. These projections & estimates are based on information currently available which we believe to be reliable, but they involve risks & uncertainties. Our actual results of operations & financial condition may differ significantly from those contained in projections & estimates. The projections & estimates should not be interpreted as legally binding commitments, but rather as flexible information subject to change occasionally.

# Main Topics

---

- **Introduction**
- **Investors' Focus**
- **Performance in 2019**
- **Global Auto Market**
- **Q&A**

# Introduction

---

- **Company Profile**
- **Global Network**
- **Financial Position and ROE**
- **Specialty on Auto PCB**

# Company Profile

---

**Company Name** : Chin-Poon Industrial Co., Ltd.

**Established** : September 26<sup>th</sup>,1979 (Listed since October 1996)

**Representative** : Vincent Huang / Chairperson

**Business** : Rigid Printed Circuit Board

**Products** : HDI, Multilayer, Single-Sided, Double-Sided

Heavy Copper, Heat Sinks, Semiflex, Cu Inlay

STH(Silver Paste Through Hole), Cu TH(Copper Paste Through Hole)

**Capital** : NT\$ 3.97 billions

**Equity** : NT\$ 15.66 billions (2019Q3)

**Revenue** : NT\$ 20.17 billions (2018), NT\$ 13.49 billions (2019Q3)

**Employee** : 8,700+ (Taiwan 3,800+ , China 3,600+ , Thailand 1,300+)

**Address** : No.17, Ln. 5, Sec. 2, Nanshan Rd., Luzhu Dist., Taoyuan City 33852, Taiwan

# Total Solutions for Rigid PCB



## HDI

Main Application: mobile phone 、 PDA 、 V8 、 Digital Camera



## Multi-layer Board

Main Application: Telecom 、 Computer Peripheral 、 Aero Industry



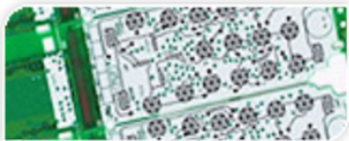
## Double Side board

Main Application: Consumer 、 Telecom 、 Industrial 、 Aero Industry



## Metal PCB

Main Application: Power Supply 、 ABS 、 Engine Control Module 、 Lighting Fixture 、 Back light Module



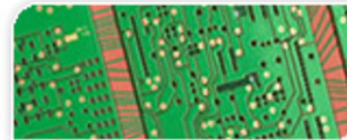
## Silver Through Hole

Main Application: Telecom 、 Computer peripheral



## Copper Through Hole

Main Application: Consumer



## Heavy Copper Board

Main Application: Consumer 、 Telecom 、 Industrial Peripheral 、 Aero Industry



## Single Side Board

Main Application: Consumer 、 Telecom 、 Industrial 、 Aero Industry



## Silver Jumper

Main Application: Consumer 、 Telecom 、 Industrial Peripheral 、 Aero Industry



## Carbon Jumper

Main Application: Consumer Peripheral 、 Telecom 、 Industrial 、 Aero Industry

# Global Network



U.K.  
Spain  
Netherlands  
Germany

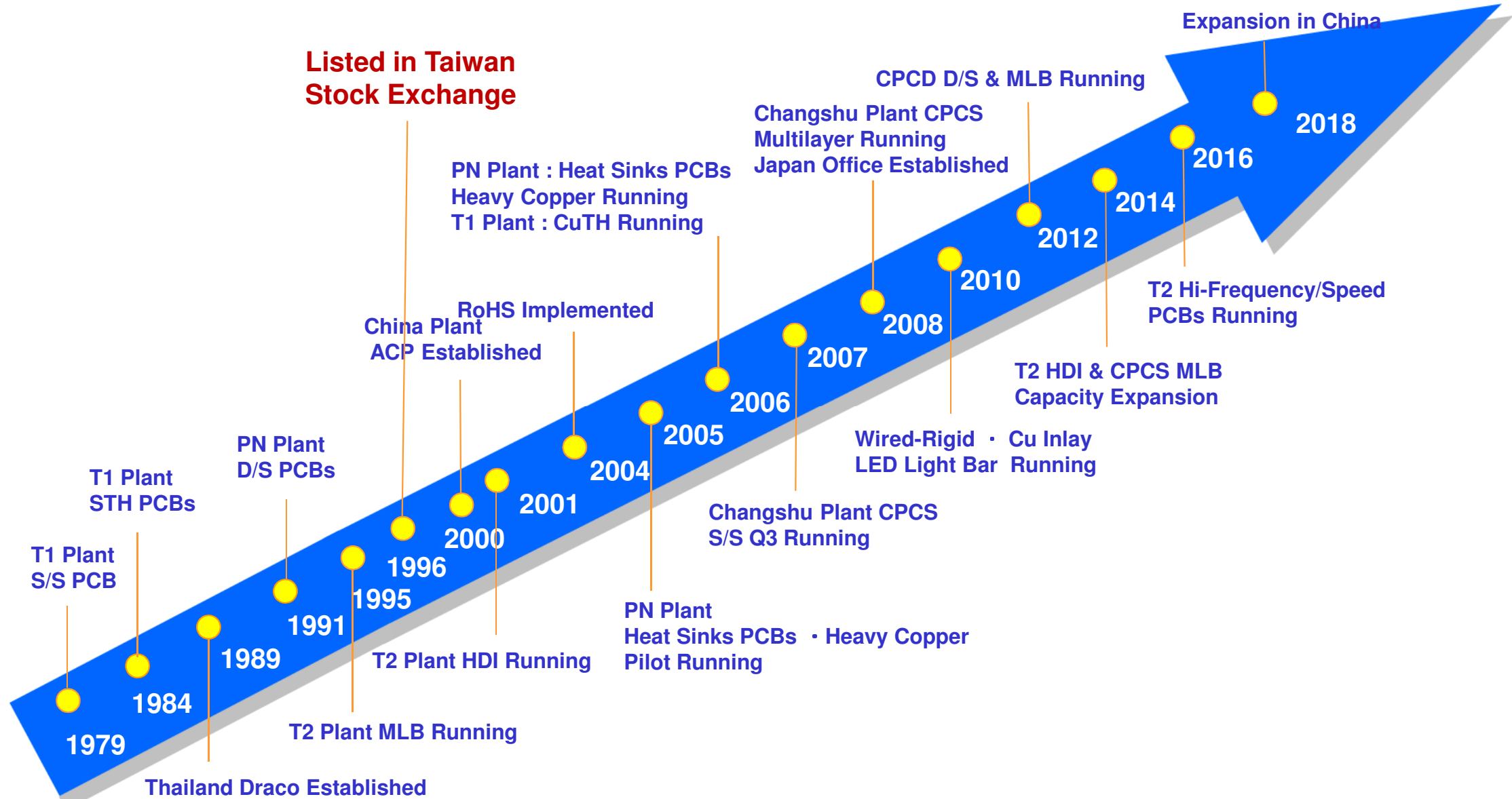
China  
Korea  
Japan  
Thailand  
Taiwan

U.S.A.  
Mexico

Malaysia

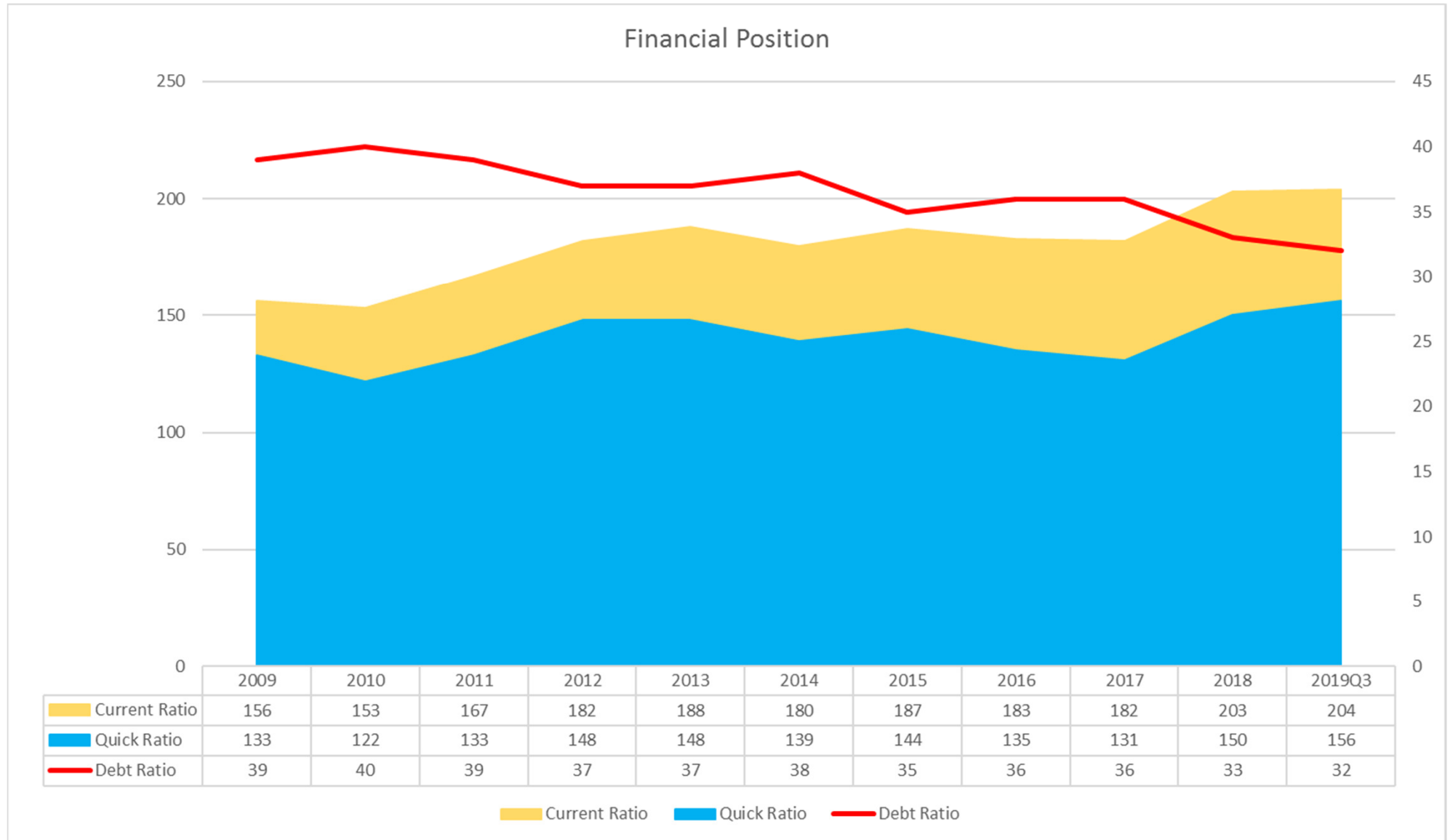
Taiwan

# Milestone

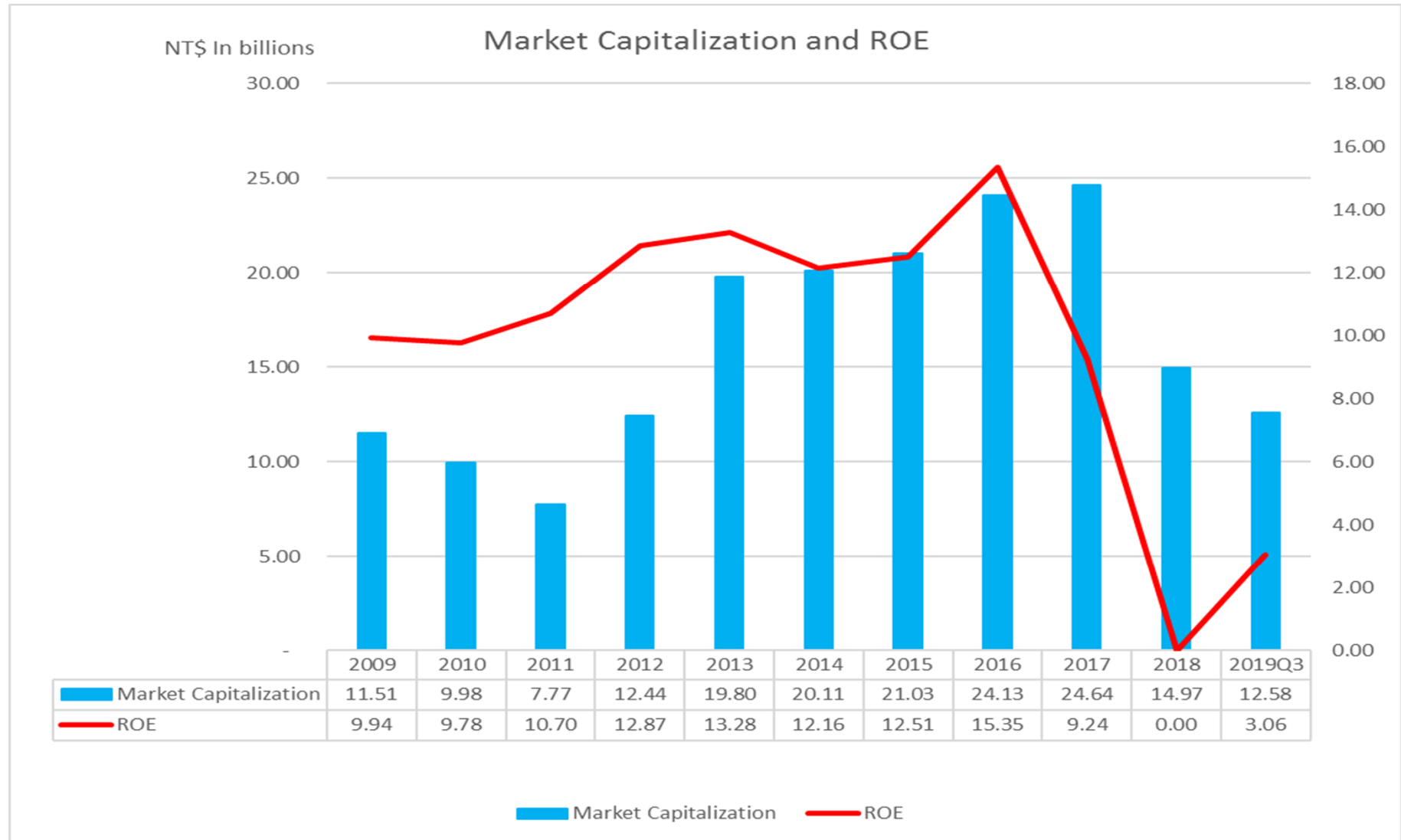




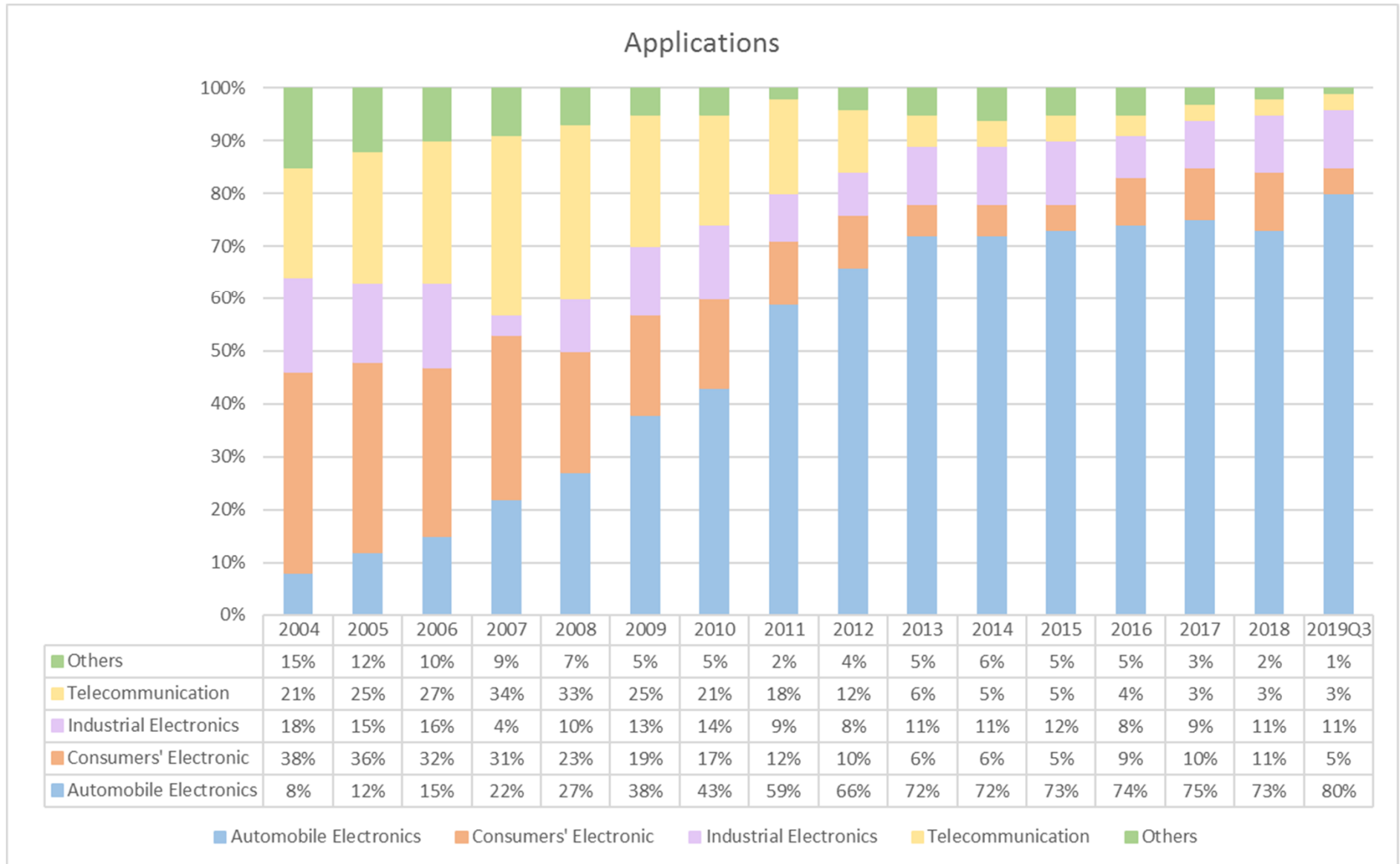
# Strong Financial Position



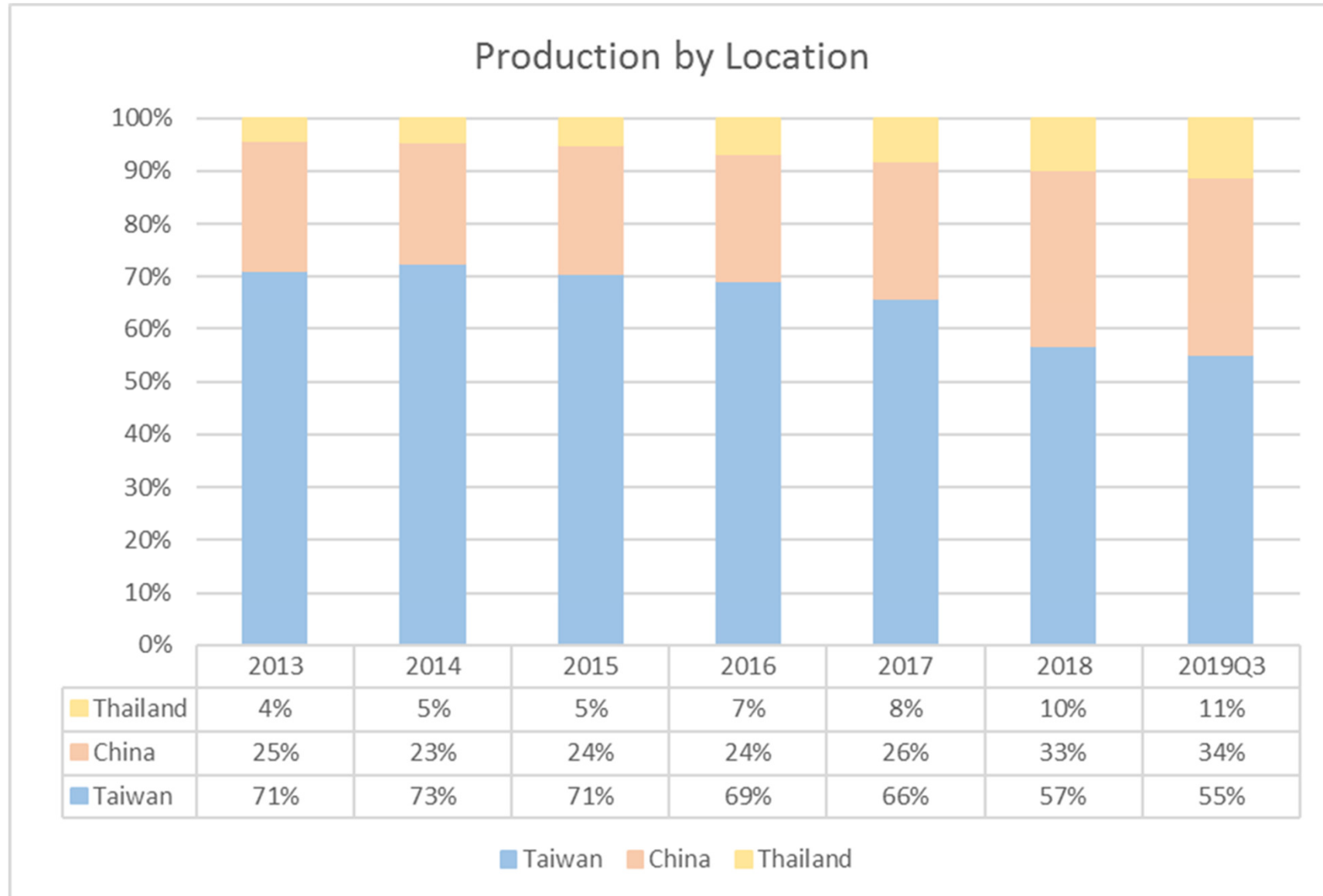
# Market Capitalization and ROE



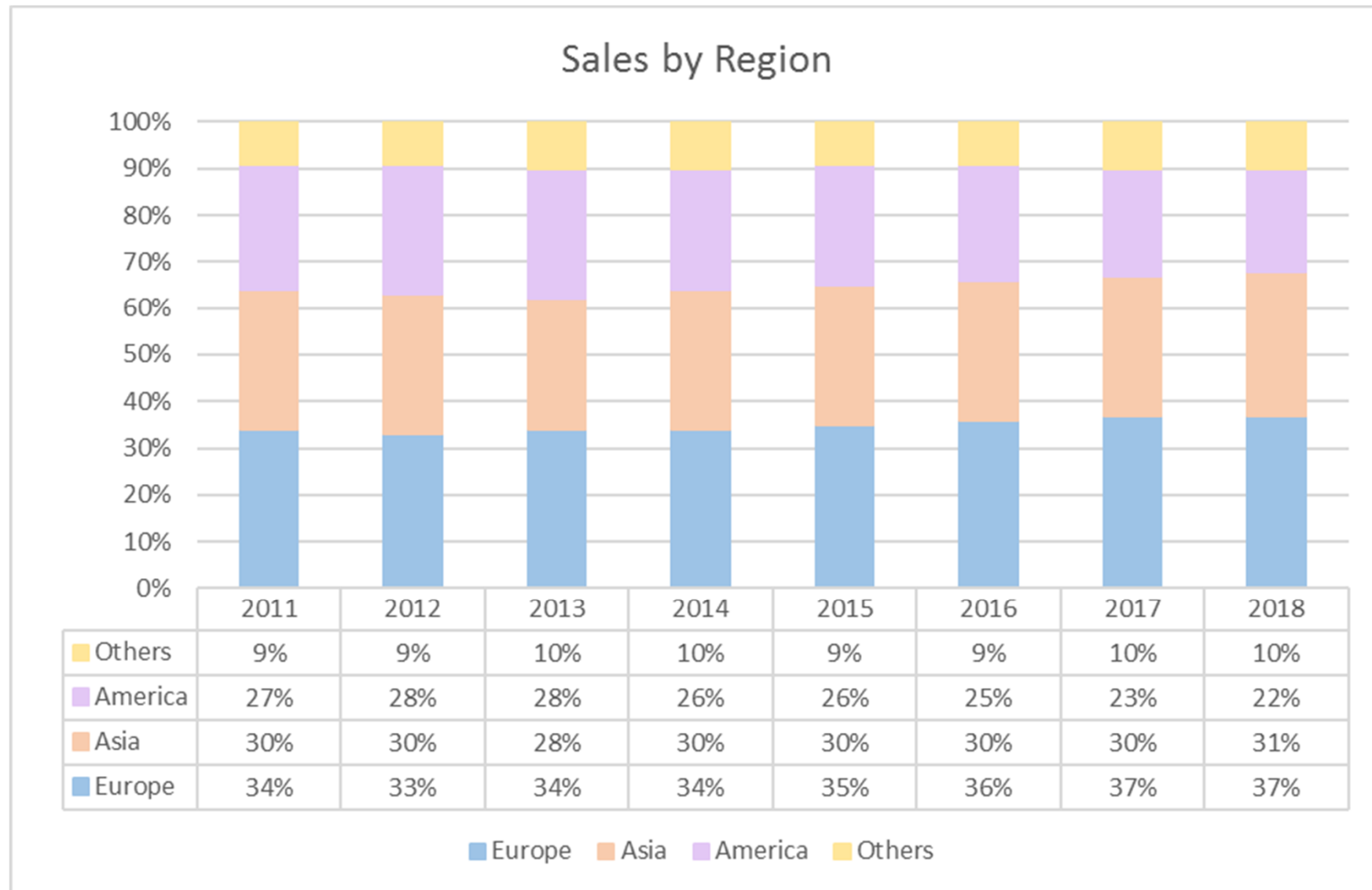
# Specialty on Auto PCB



# 55% of Production in Taiwan



# Chin Poon's Sales by Region

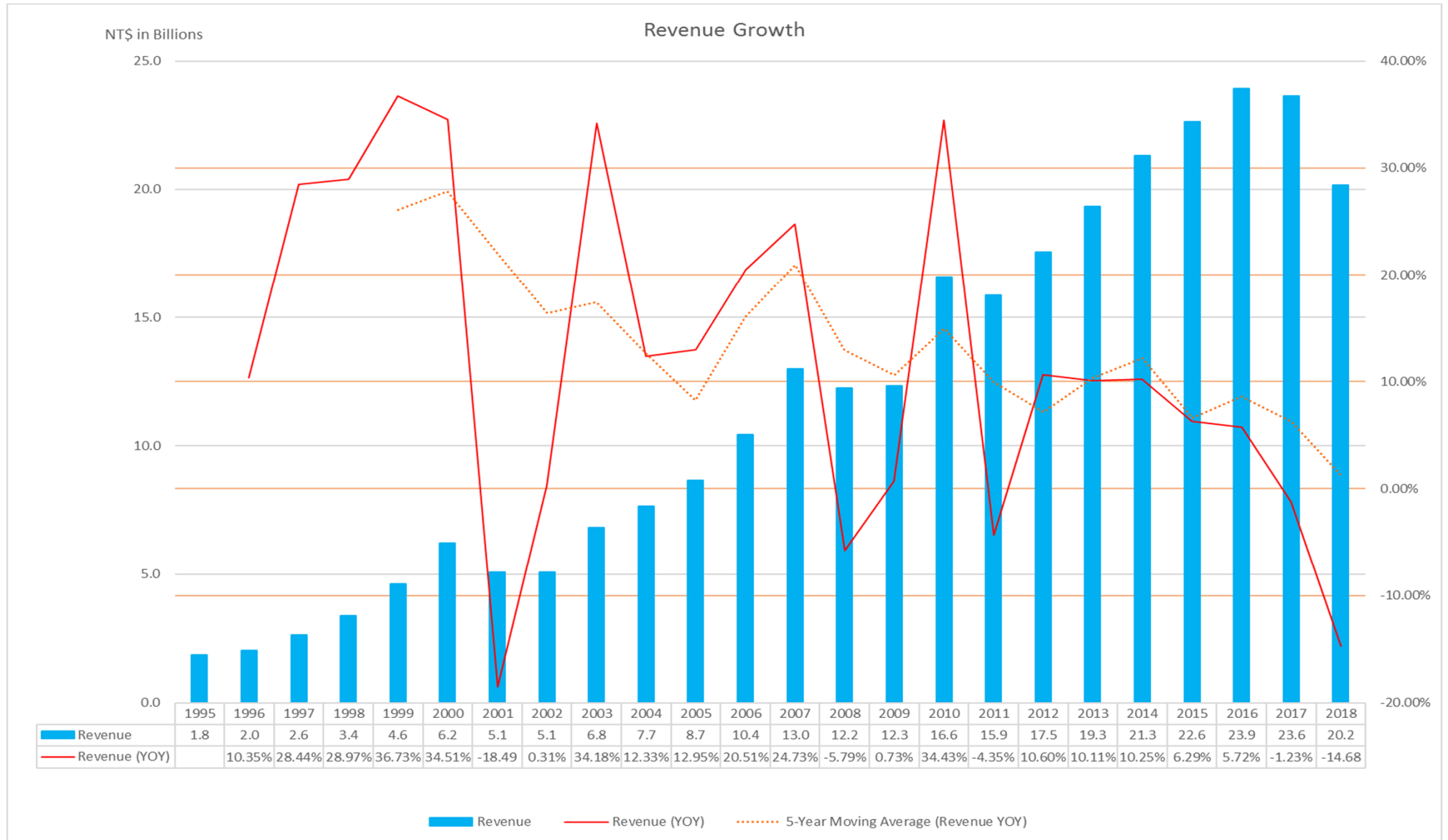


# Investors' Focus

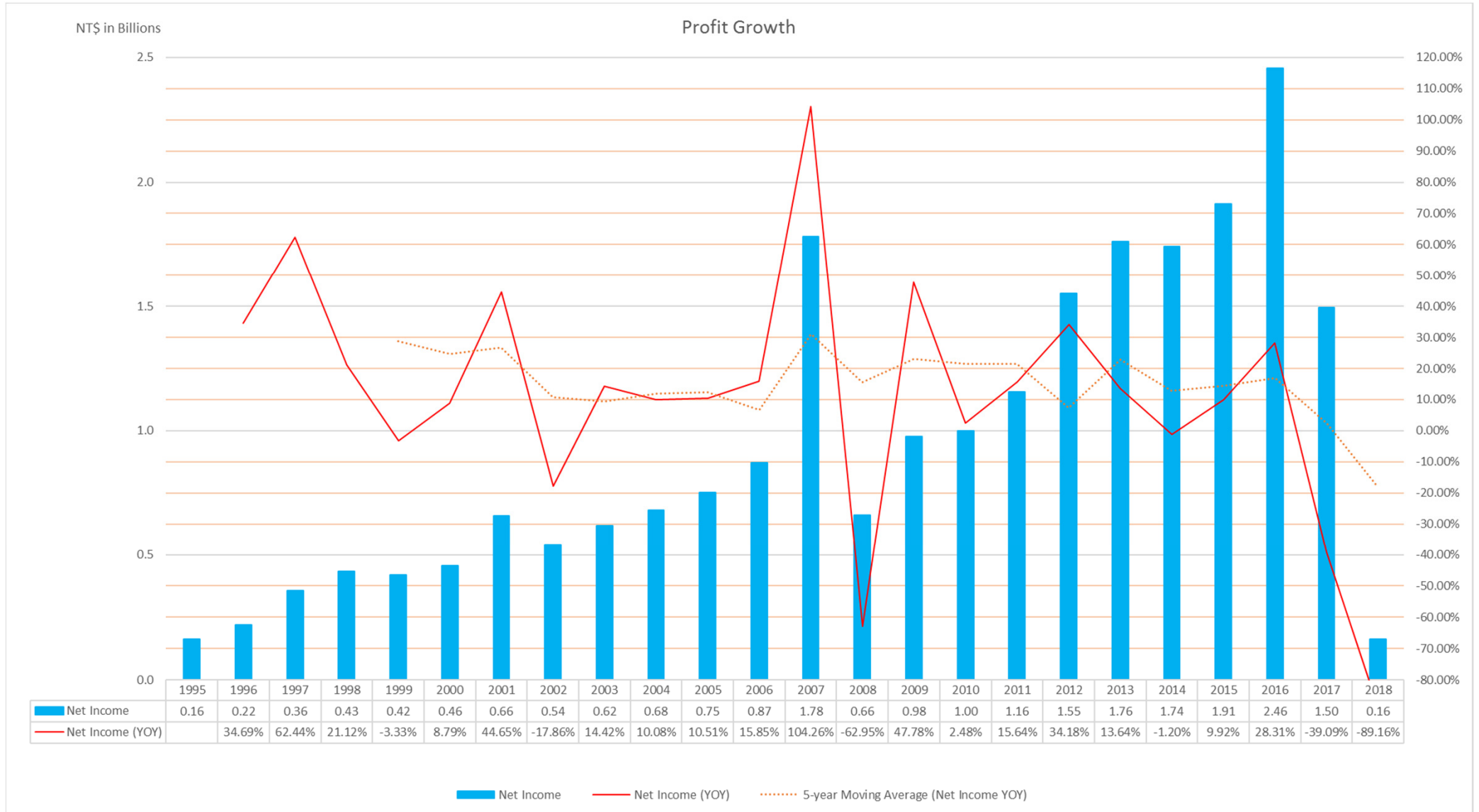
---

- **Revenue Growth**
- **Profit Growth**
- **Payout Ratio**

# Revenue Growth

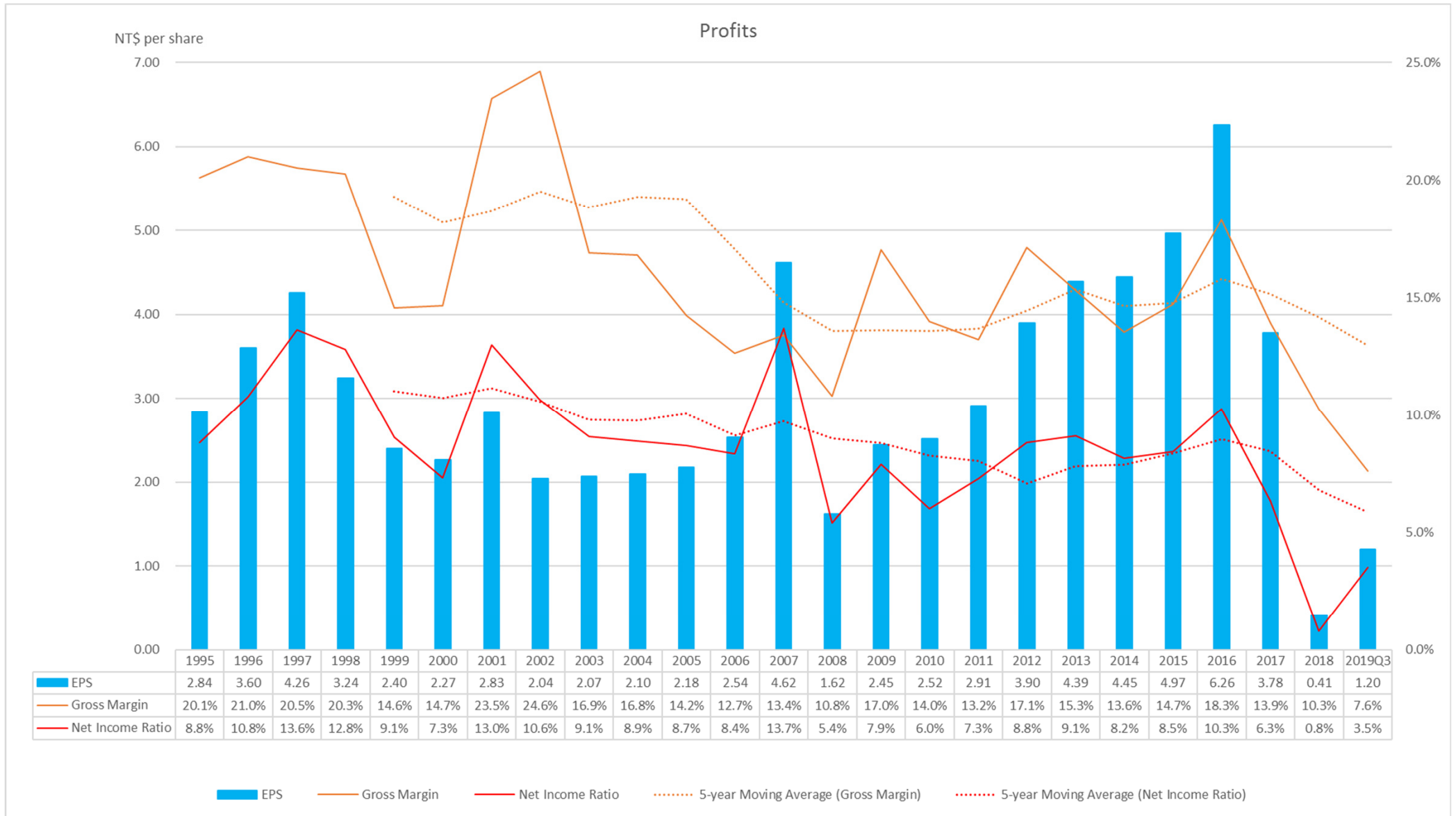


# Profit Growth

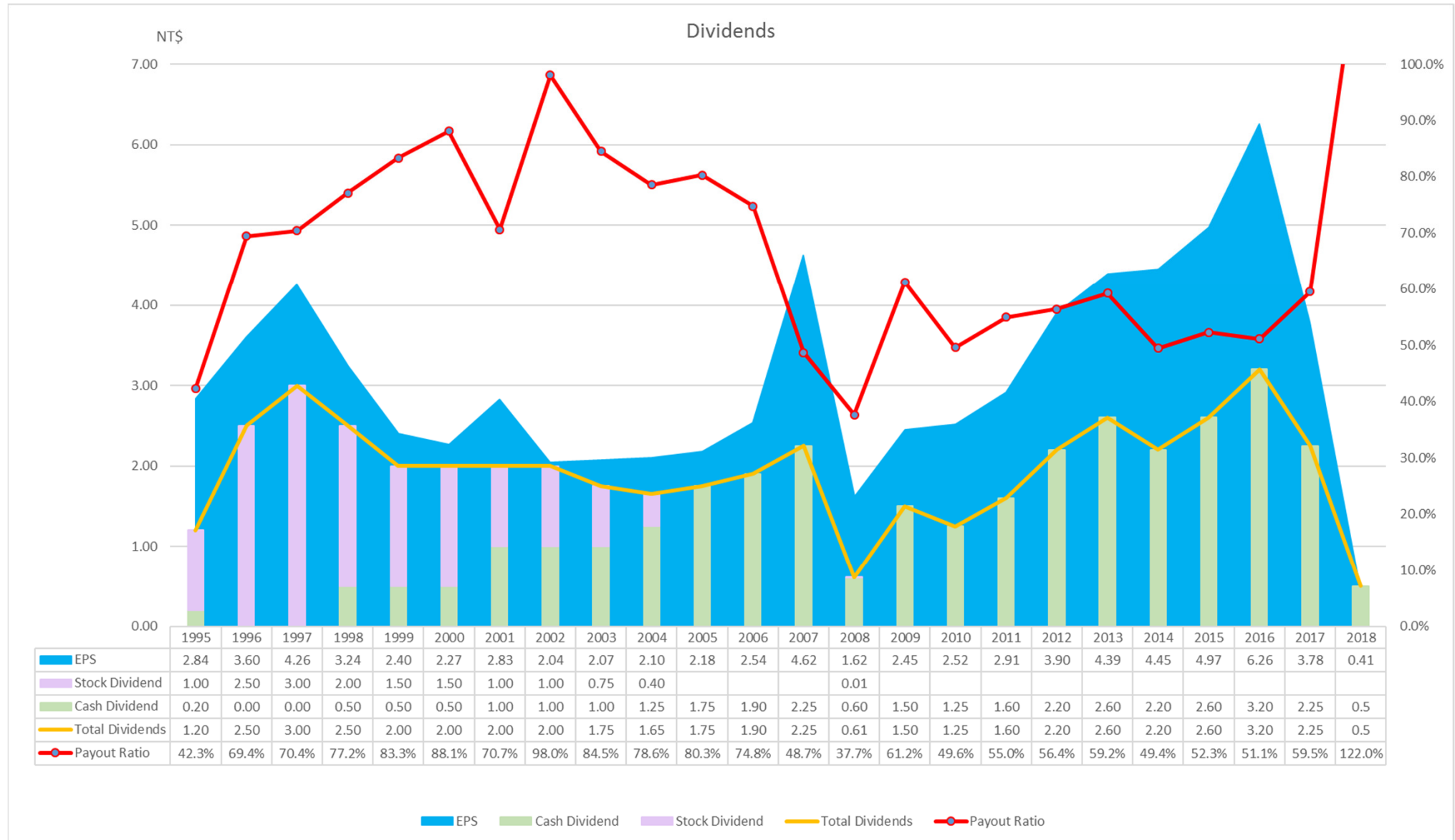




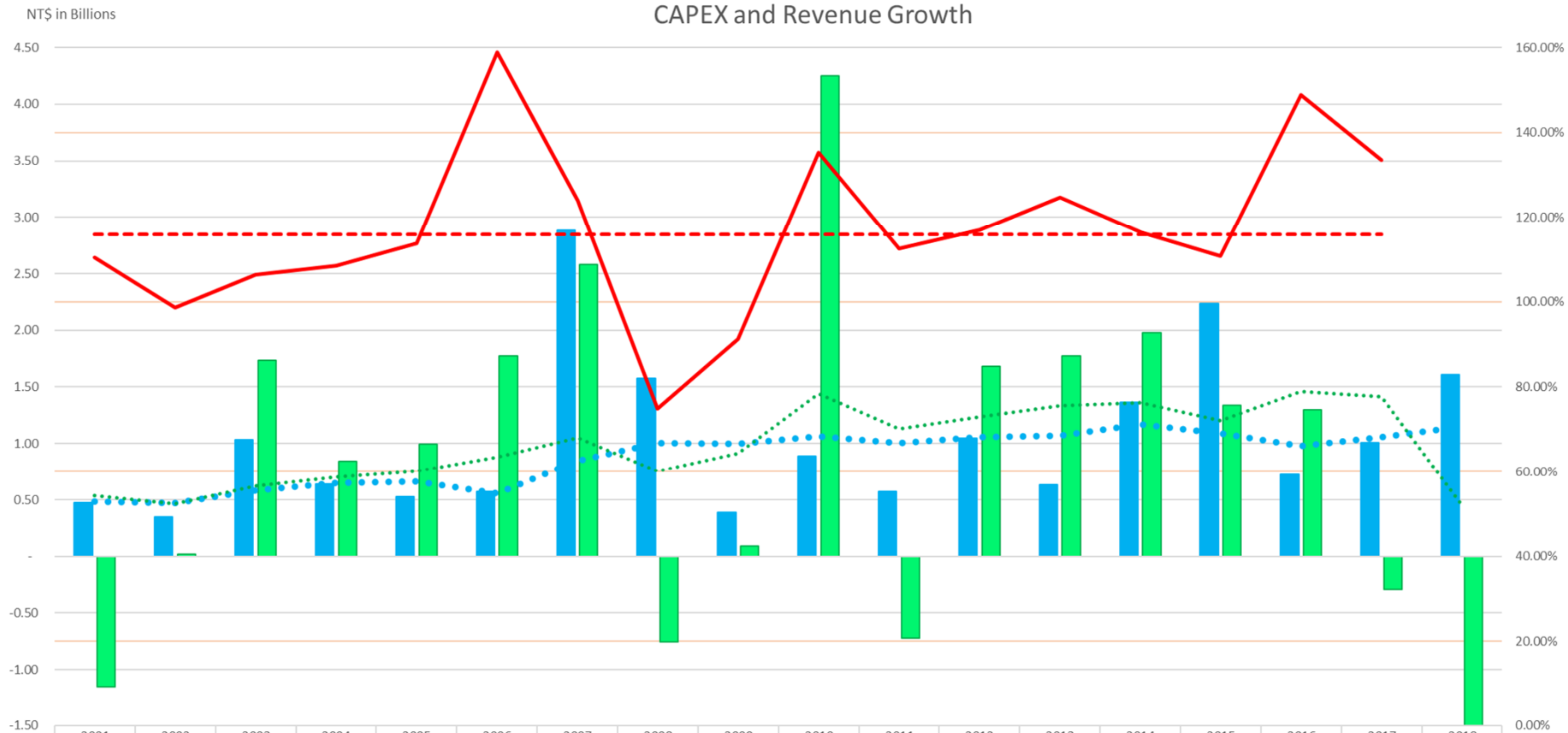
# Gross Margin and Net Income Ratio



# Payout Ratio



# CAPEX and Revenue Growth



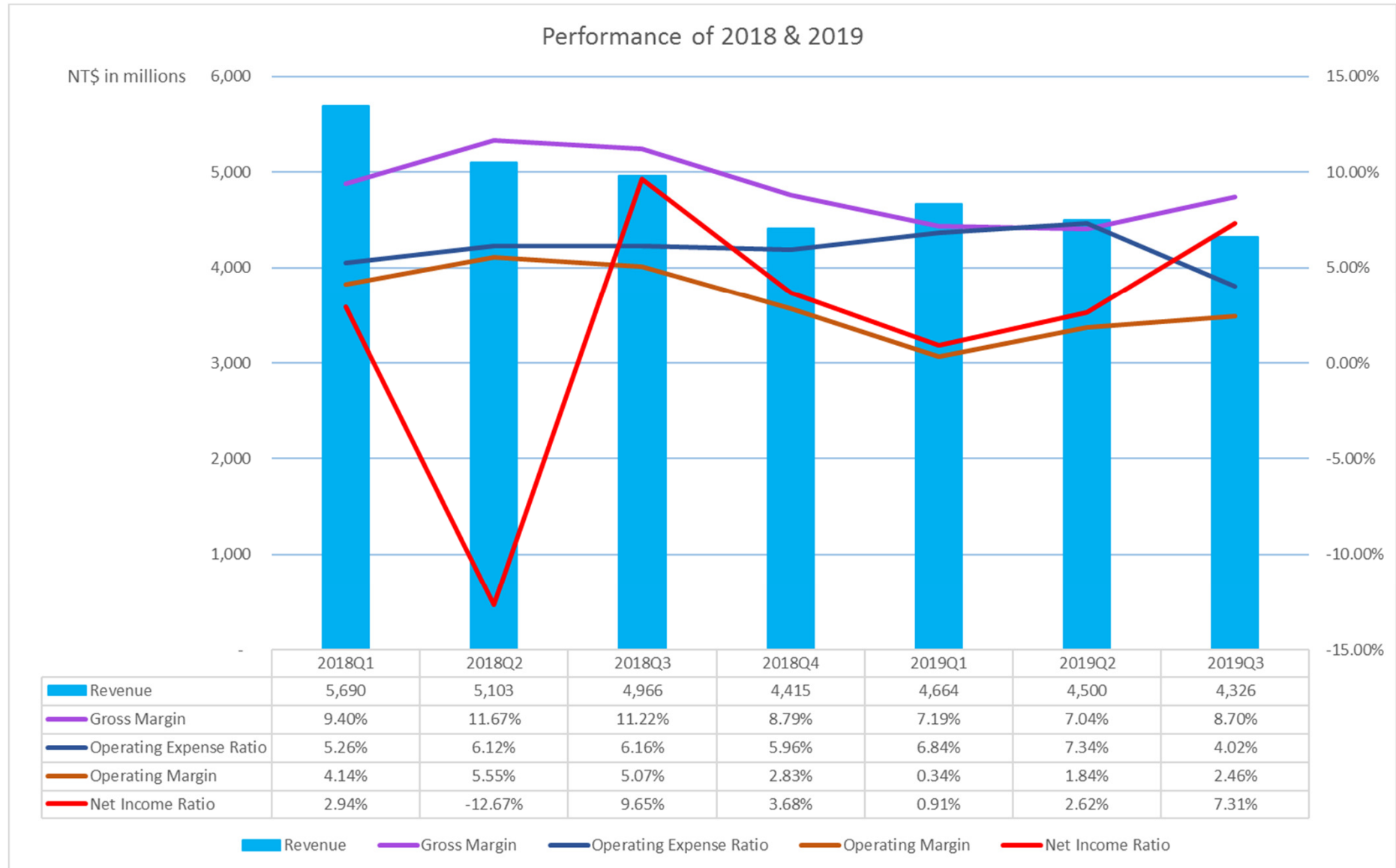
	2001	2002	2003	2004	2005	2006	2007	2008	2009	2010	2011	2012	2013	2014	2015	2016	2017	2018
CAPEX	0.47	0.35	1.04	0.64	0.53	0.58	2.88	1.58	0.39	0.89	0.57	1.05	0.63	1.36	2.24	0.72	1.01	1.61
Revenue Growth	-1.15	0.02	1.74	0.84	0.99	1.77	2.58	-0.75	0.09	4.25	-0.72	1.68	1.77	1.98	1.34	1.30	-0.29	-3.47
8-year Moving Average (CAPEX)	0.49	0.47	0.58	0.65	0.66	0.55	0.84	1.01	1.00	1.06	1.01	1.06	1.07	1.17	1.09	0.98	1.06	1.15
8-year Moving Average (Revenue Growth)	0.54	0.46	0.62	0.70	0.75	0.88	1.05	0.75	0.91	1.44	1.13	1.24	1.33	1.36	1.21	1.46	1.41	0.45
8-year Moving Average (Revenue Growth / CAPEX)	110%	99%	106%	109%	114%	159%	124%	75%	91%	135%	112%	117%	125%	116%	111%	149%	133%	
22-year Average (Revenue Growth / CAPEX)	116%	116%	116%	116%	116%	116%	116%	116%	116%	116%	116%	116%	116%	116%	116%	116%	116%	116%

■ CAPEX   
 ■ Revenue Growth   
 ●●● 8-year Moving Average (CAPEX)   
 ●●● 8-year Moving Average (Revenue Growth)   
 — 8-year Moving Average (Revenue Growth / CAPEX)   
 - - - 22-year Average (Revenue Growth / CAPEX)

---

# Performance in 2019

# Performance of 2018 & 2019

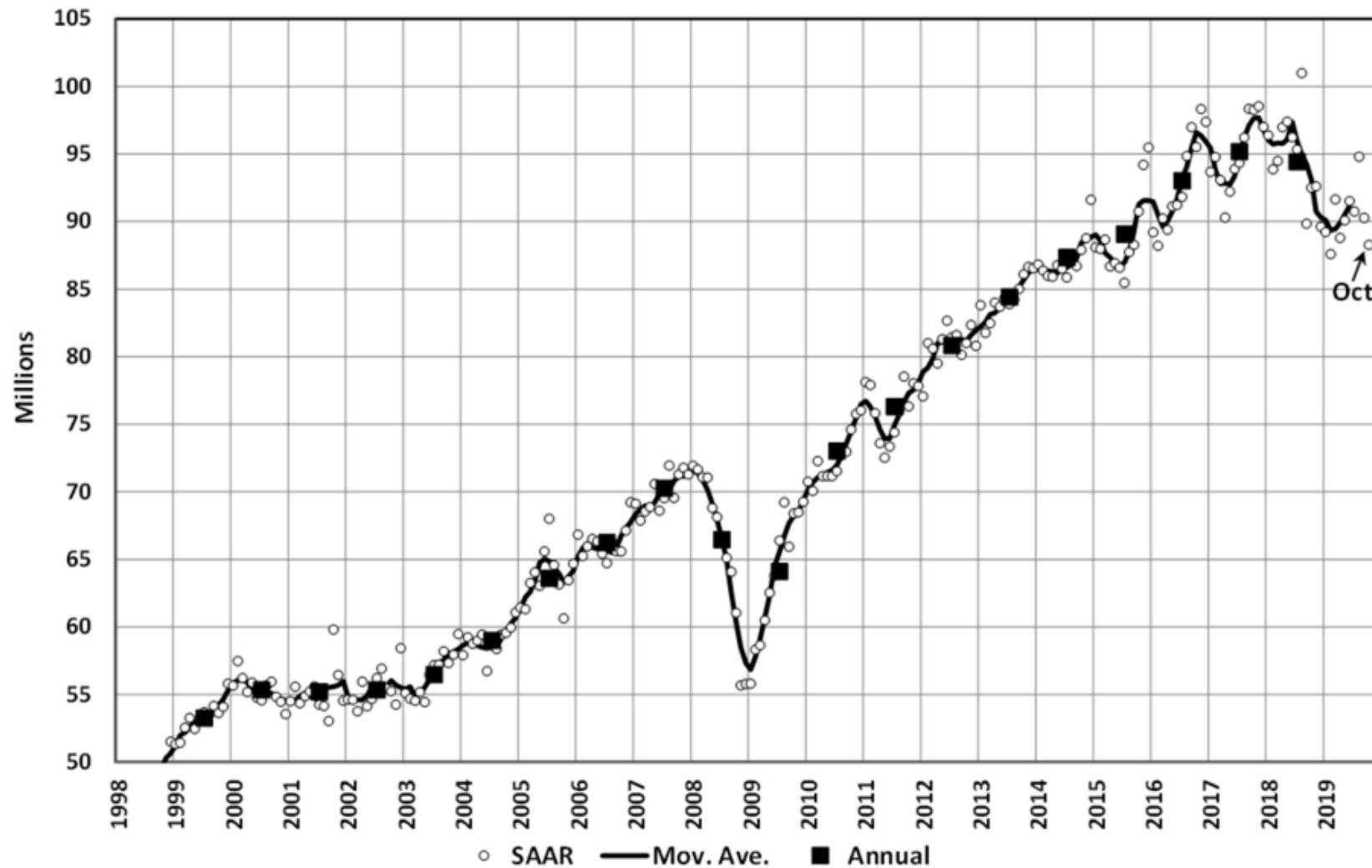


---

# Global Auto Market

# Global Automotive Market

## Global Light Vehicle Sales



Sources: LMC Automotive Global Light Vehicle Sales Update (October 2019)

# Q & A





# Thank You

IR Contact: Alex Hsiao

Tel: +886-3-322-2226

e-mail: [spokesman@cppcb.com.tw](mailto:spokesman@cppcb.com.tw)